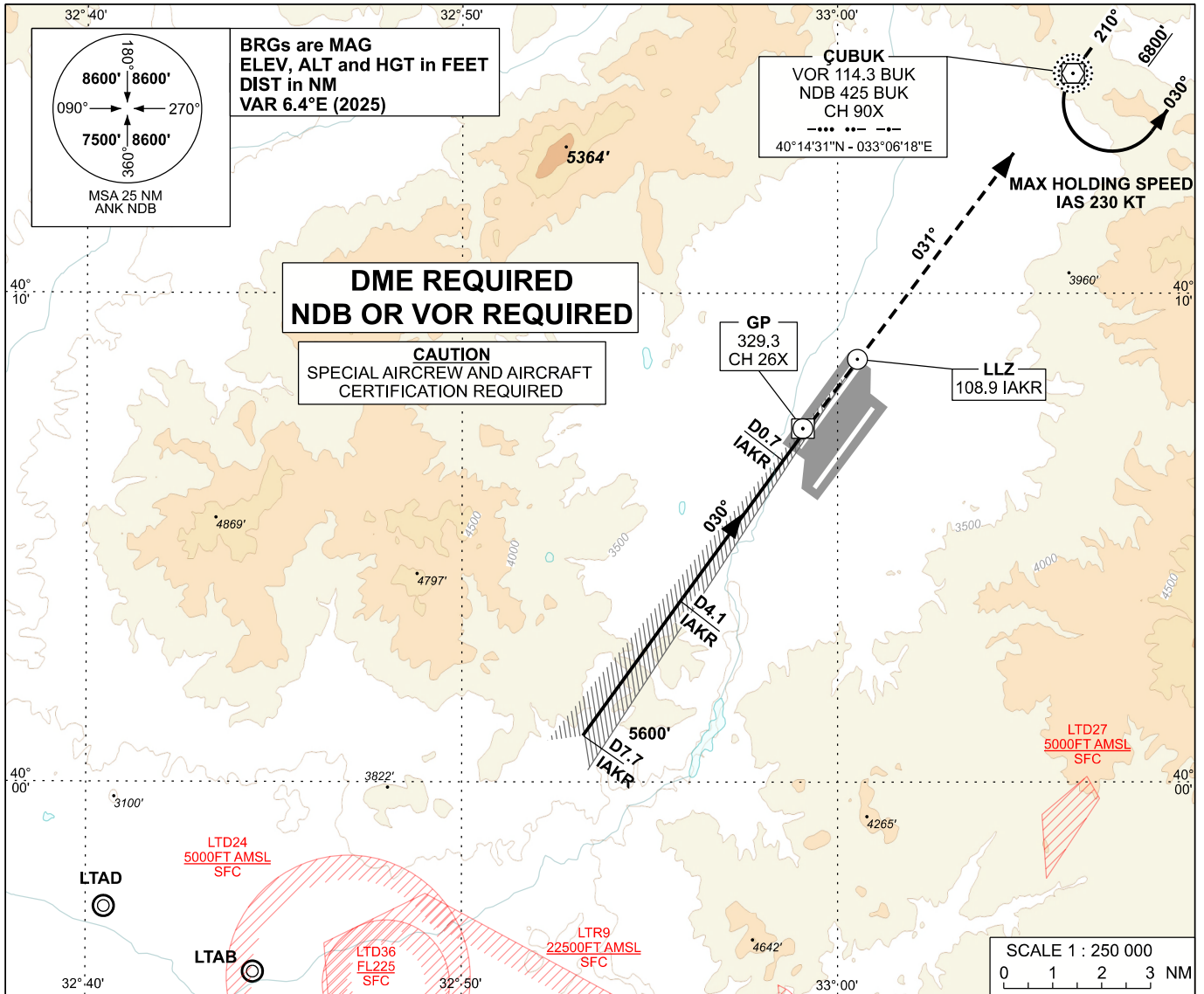


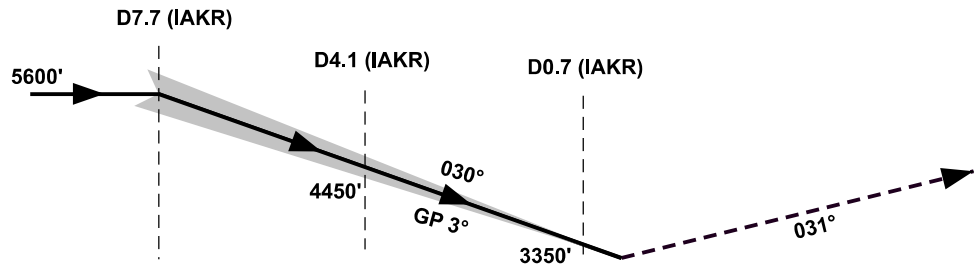
**INSTRUMENT  
APPROACH  
CHART - ICAO**

APP	119.6 - 119.1	AD ELEV	3158 FT
TWR	118.1 - 257.8	TRANSITION ALTITUDE	10 000 FT
ATIS	123.6		

**ANKARA/ESENBOĞA  
ILS Z CAT II  
RWY 03L**



**MISSED APPROACH**  
Proceed to BUK VOR/NDB cross 5500 FT or above then continue climbing to 6600 FT on 057° from BUK then turn left climbing to 6800 FT proceed to BUK and hold



RWY 03L THR ELEV 3104 FT

NM to/from THR RWY 03L		14	13	12	11	10	9	8	7	6	5	4	3	2	1	0	1	2	3	4	5	6	7
<b>OCA (H)</b>		<b>A</b>				<b>B</b>				<b>C</b>				<b>D</b>				- ILS RDH 50 FT - INTERCEPT GP AT D7.7 (IAKR)					
<b>Straight-In Approach</b>	MISSED APP GR %4.2	3240' ( 136' )																					
<b>Radio Altimeter</b>		140'																					

CHANGE: PROCEDURE REVISED