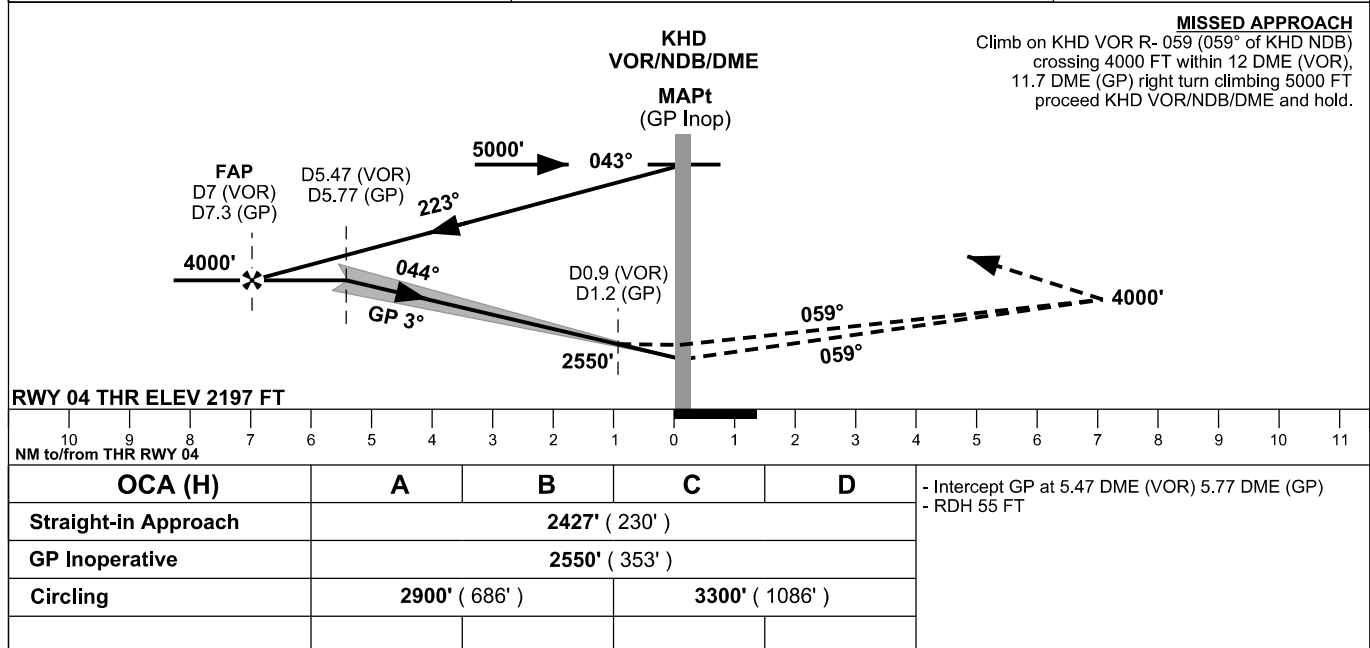
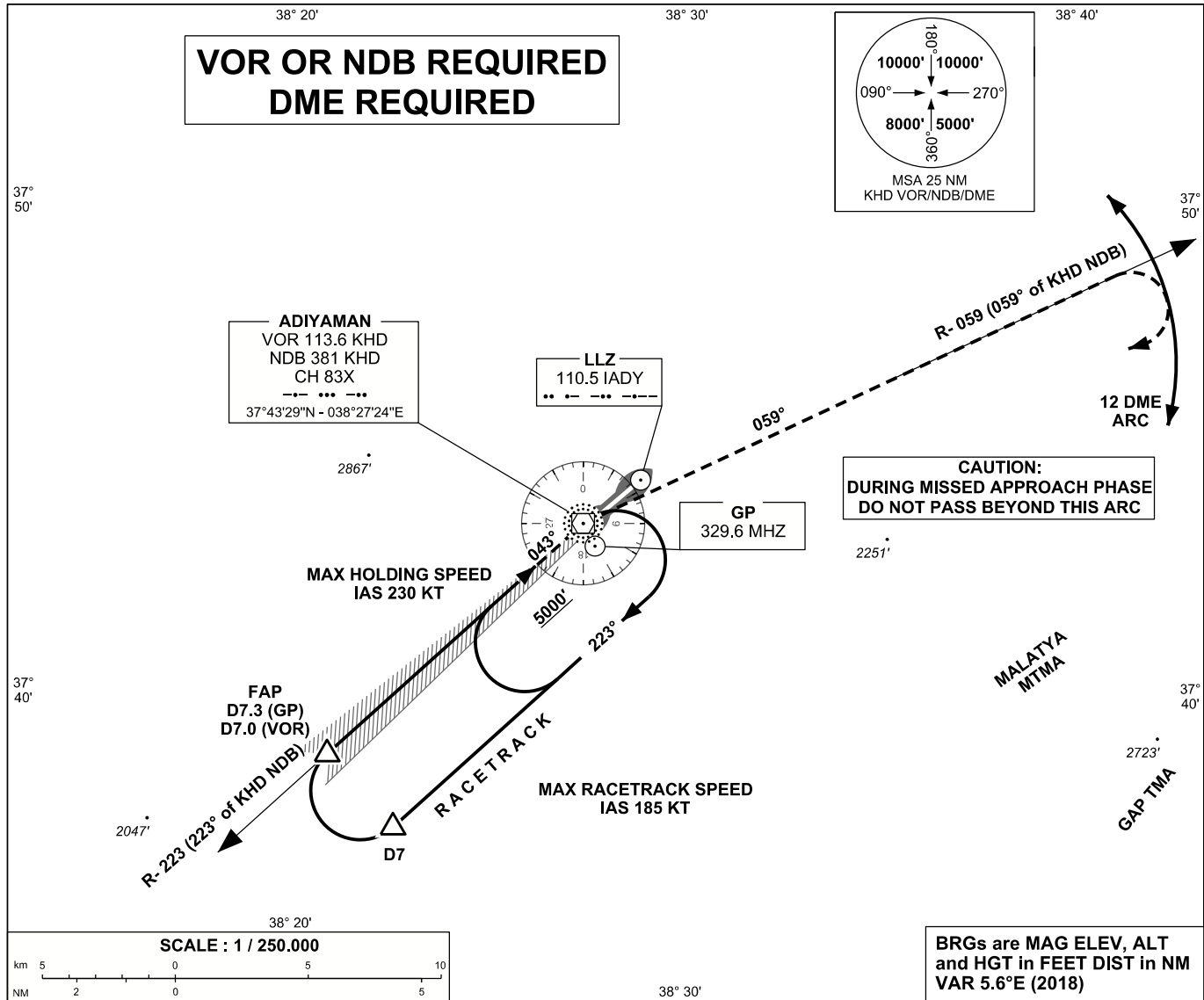


ADIYAMAN
ILS Z CAT I
RWY 04

APP	118.775 (ERHAÇ)	AD ELEV	2214 FT
TWR	119.050 - 358.875	TRANSITION ALTITUDE	10 000 FT
ATIS	-		

INSTRUMENT
APPROACH
CHART - ICAO



CHANGE: NEW PROCEDURE