

CHANGE: CHART REVISED

RUNWAY PHYSICAL CHARACTERISTICS		
RWY	SURFACE	BEARING STRENGTH
RWY 18/36	CONCRETE	PCN 76 R / C / W / T
LIGHTING		
APCH 18	-	
APCH 36	Simple APP 333 M, LIH	
RWY 18	Edge, End, THR, SWY	
RWY 36	Edge, End, THR, SWY	
OTHER LIGHTING	ABN (Flg W, G), TWY (Edge), APRON, WDI	

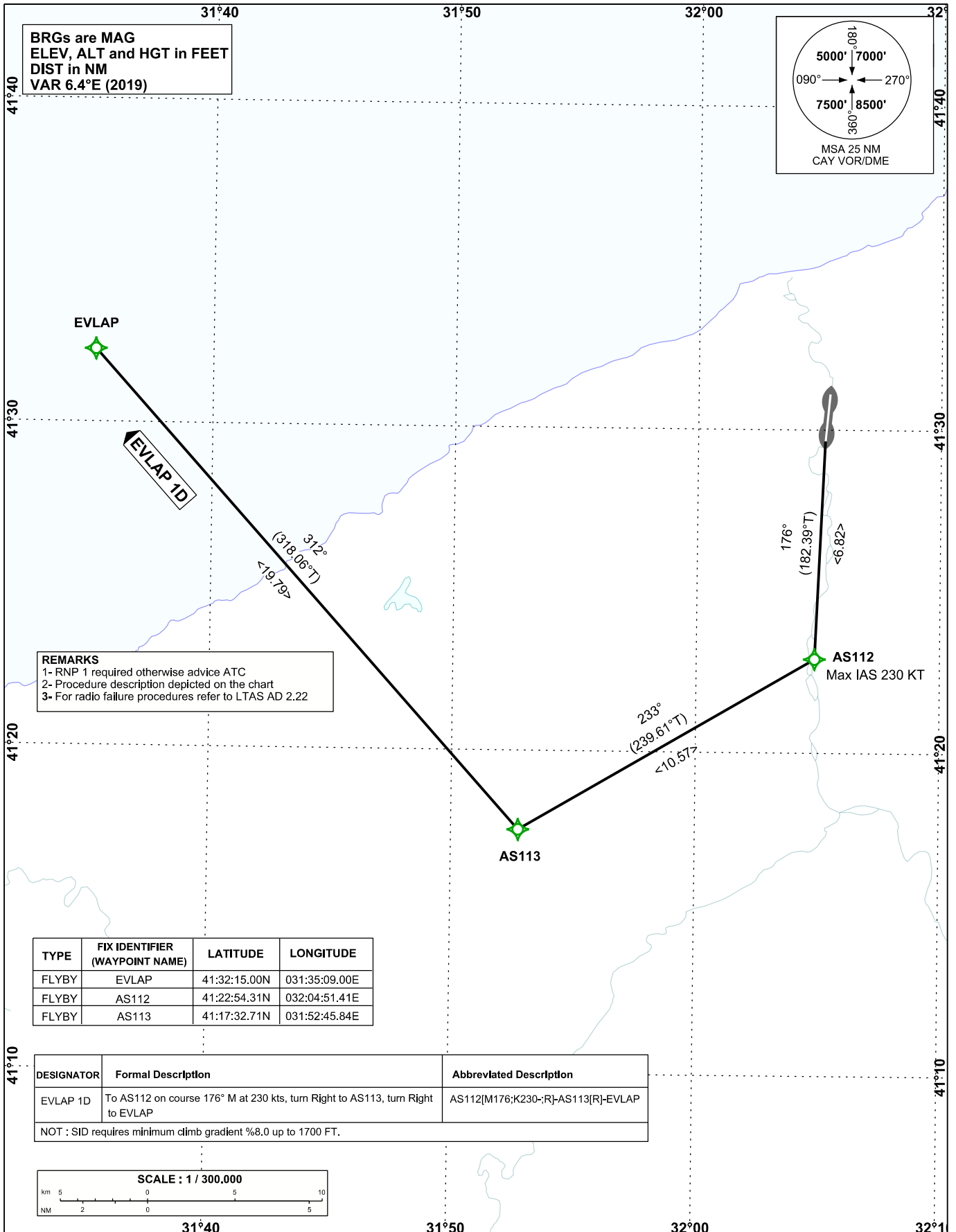
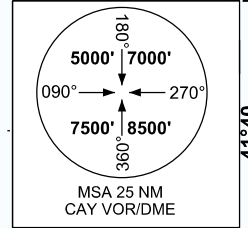
STANDARD DEPARTURE  
CHART INSTRUMENT (SID)  
ICAO

TRANSITION ALTITUDE  
10000 FT

APP: 123.7-119.55-241.725  
TWR: 123.7-119.55-241.725

ZONGULDAK/ÇAYCUMA  
RNAV (GNSS)  
RWY 18

BRGs are MAG  
ELEV, ALT and HGT in FEET  
DIST in NM  
VAR 6.4°E (2019)

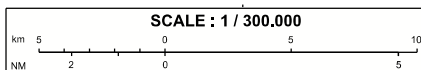


REMARKS  
1- RNP 1 required otherwise advice ATC  
2- Procedure description depicted on the chart  
3- For radio failure procedures refer to LTAS AD 2.22

TYPE	FIX IDENTIFIER (WAYPOINT NAME)	LATITUDE	LONGITUDE
FLYBY	EVLAP	41:32:15.00N	031:35:09.00E
FLYBY	AS112	41:22:54.31N	032:04:51.41E
FLYBY	AS113	41:17:32.71N	031:52:45.84E

DESIGNATOR	Formal Description	Abbreviated Description
EVLAP 1D	To AS112 on course 176° M at 230 kts, turn Right to AS113, turn Right to EVLAP	AS112[M176;K230;-R]-AS113[R]-EVLAP

NOT : SID requires minimum climb gradient %8.0 up to 1700 FT.



CHANGE: NEW PROCEDURE

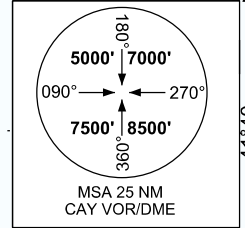
STANDARD ARRIVAL CHART  
INSTRUMENT (STAR) - ICAO

TRANSITION ALTITUDE  
10000 FT

APP: 123.7-119.55-241.725  
TWR: 123.7-119.55-241.725  
ATIS: 119.275

ZONGULDAK/ÇAYCUMA  
RNAV (GNSS)  
RWY 36

BRGs are MAG  
ELEV, ALT and HGT in FEET  
DIST in NM  
VAR 6.4°E (2019)



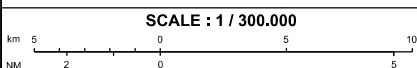
For final approach to RWY 36  
see AD 2 LTAS IAC-6

REMARKS  
1- RNP 1 required otherwise advise ATC  
2- Procedure description depicted on the chart  
3- For radio failure procedures refer to LTAS AD 2.22

TYPE	FIX IDENTIFIER (WAYPOINT NAME)	LATITUDE	LONGITUDE
FLYBY	EVLAP	41:32:15.00N	031:35:09.00E
FLYBY	FACLI	41:38:51.55N	031:52:50.91E
FLYBY	AHJET	41:18:53.87N	031:58:23.78E
FLYBY	UFKOZ (IF)	41:18:51.35N	032:05:02.95E
FLYBY	LETBU	41:07:57.00N	032:04:09.00E
FLYBY	ELFOM	41:12:58.75N	031:58:11.52E
FLYBY	AZTAF (FAF)	41:24:03.09N	032:05:06.68E

DESIGNATOR	FORMAL DESCRIPTION	DESCEND
EVLAP 1A	EVLAP-AHJET[220K-;A4800;L]-UFKOZ[200K-;A3200;L]-AZTAF[A2200]	As Cleared
FACLI 1A	FACLI-AHJET[220K-;A4800;L]-UFKOZ[200K-;A3200;L]-AZTAF[A2200]	As Cleared
LETBU 1A	LETBU[A8000]-ELFOM[A5800+;R]-AHJET[220K-;A4800;R]-UFKOZ[200K-;A3200;L]-AZTAF[A2200]	As Cleared

CHANGE: CHART REVISED

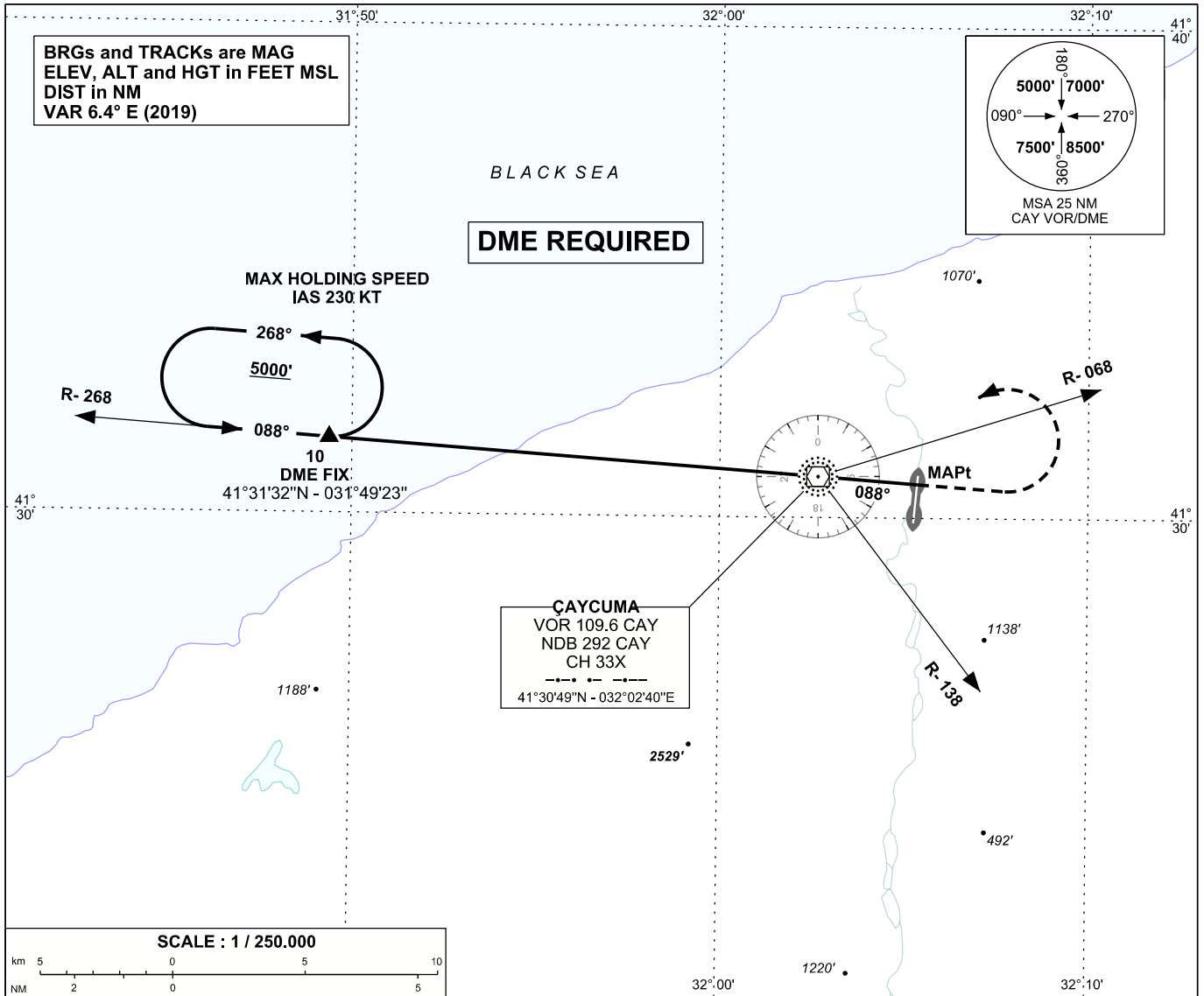


**INSTRUMENT  
APPROACH  
CHART - ICAO**

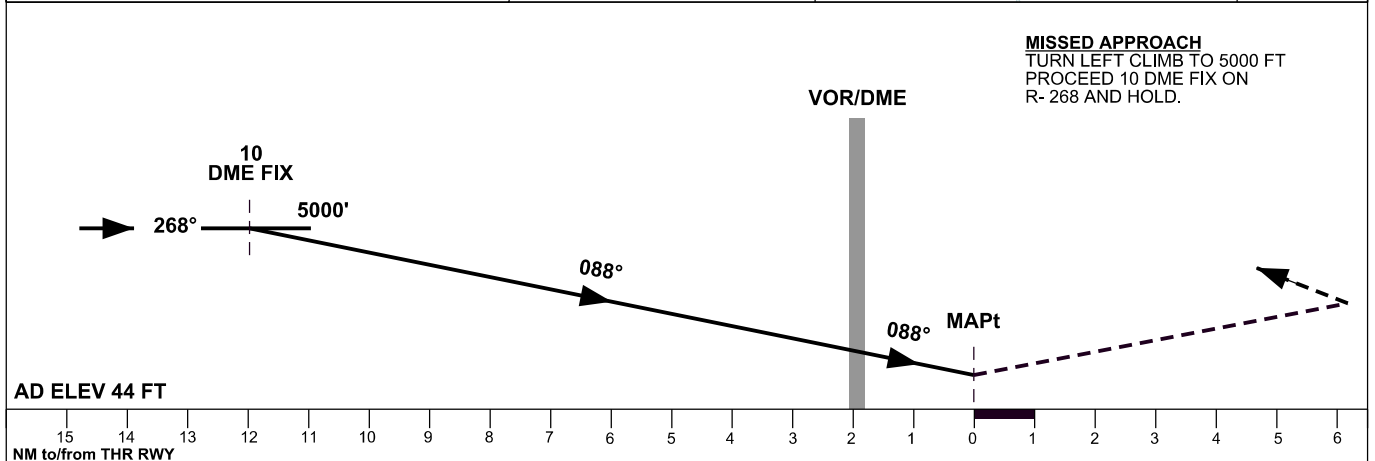
APP	119.55 - 123.7 - 241.725	AD ELEV	44 FT
TWR	119.55 - 123.7 - 241.725	TRANSITION ALTITUDE	10000 FT
ATIS	119.275		

**ZONGULDAK/ÇAYCUMA**

**VOR A**



**MISSED APPROACH**  
TURN LEFT CLIMB TO 5000 FT  
PROCEED 10 DME FIX ON  
R-268 AND HOLD.



CHANGE: AD ELEV, OCH

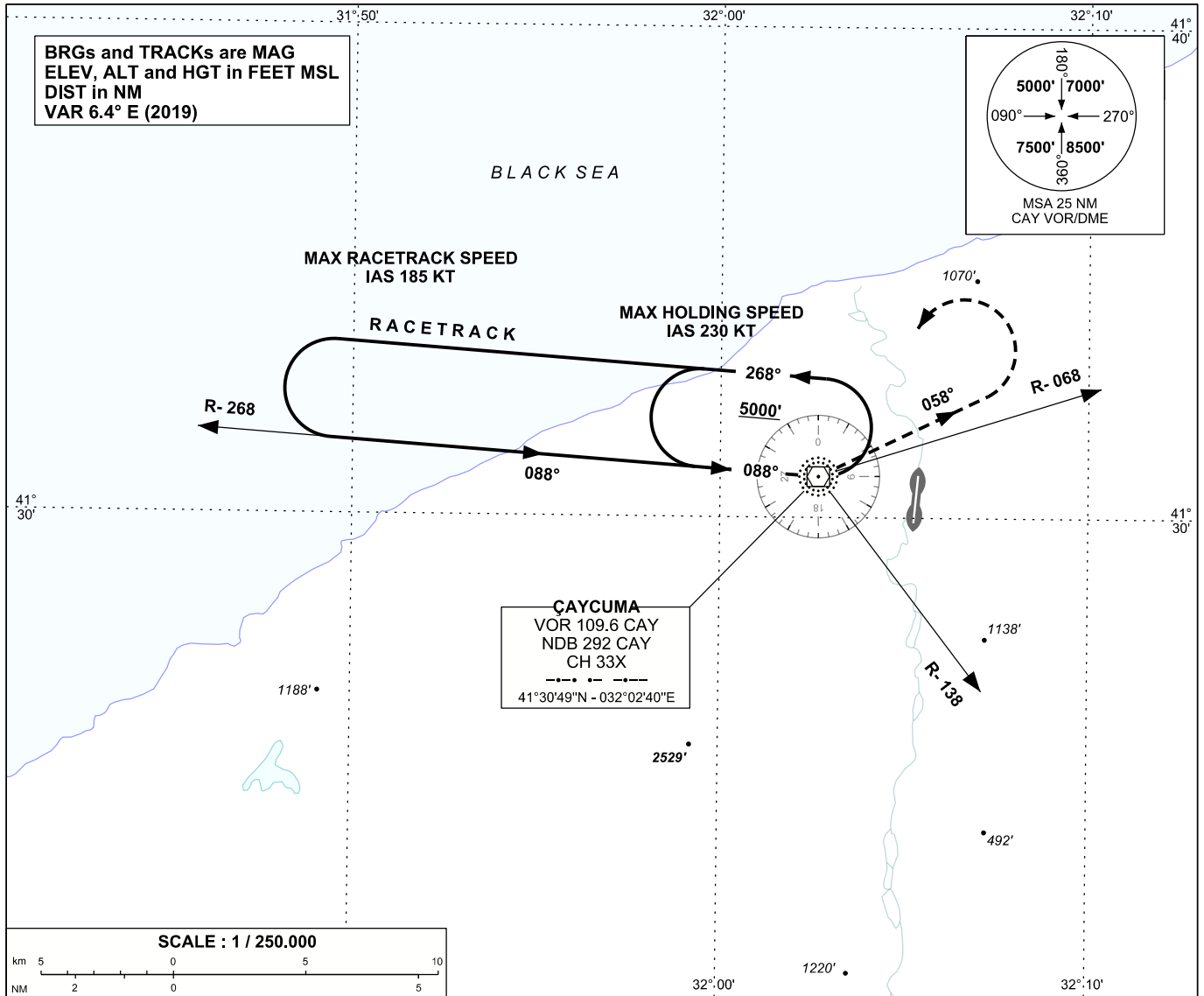
OCA (H)	A	B	C	D
Straight-in Approach	NOT AUTHORIZED			
Circling	2100' ( 2056' )		2600' ( 2556' )	

ZONGULDAK/ÇAYCUMA

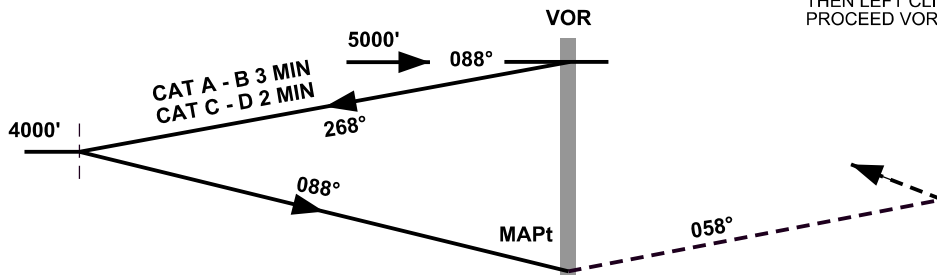
APP	119.55 - 123.7 - 241.725	AD ELEV	44 FT
TWR	119.55 - 123.7 - 241.725	TRANSITION ALTITUDE	10000 FT
ATIS	119.275		

INSTRUMENT  
APPROACH  
CHART - ICAO

VOR B



**MISSED APPROACH**  
CLIMB TO 3500 FT ON R- 058  
THEN LEFT CLIMBING 5000 FT  
PROCEED VOR AND HOLD



AD ELEV 44 FT

NM to/from THR RWY

OCA (H)	A	B	C	D
Straight-in Approach	NOT AUTHORIZED			
Circling	2100' ( 2056' )		2600' ( 2556' )	

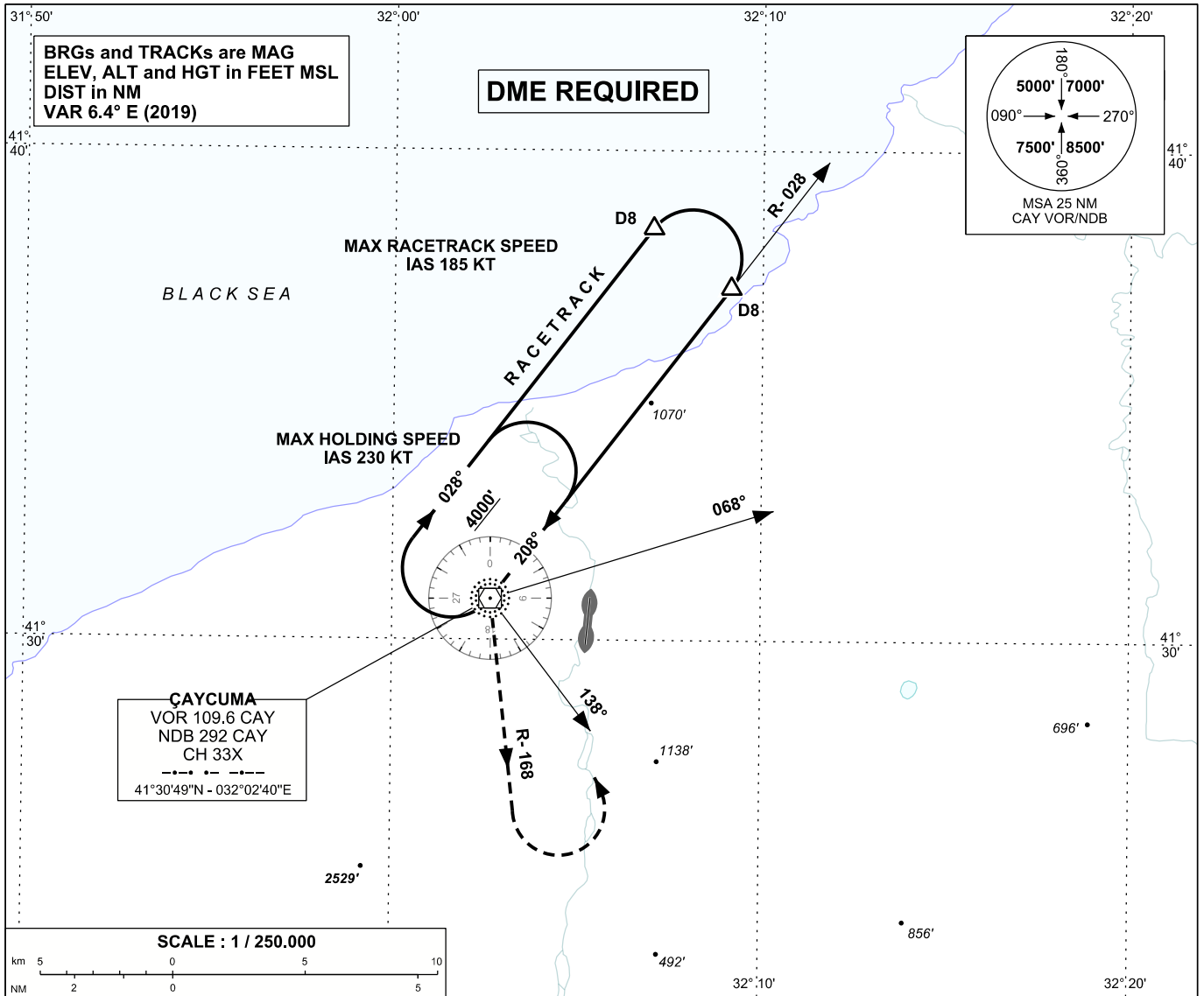
CHANGE: AD ELEV, OCH

**INSTRUMENT  
APPROACH  
CHART - ICAO**

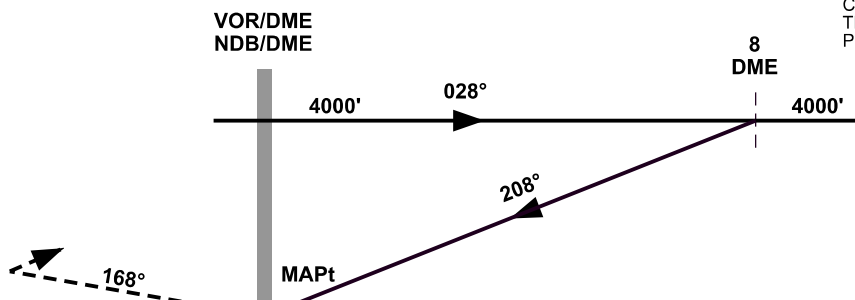
APP	123.7 - 119.55 - 241.725	AD ELEV	44 FT
TWR	123.7 - 119.55 - 241.725	TRANSITION ALTITUDE	10000 FT
ATIS	119.275		

**ZONGULDAK/ÇAYCUMA**

**VOR C, NDB A**



**MISSED APPROACH**  
CLIMB 3200 FT ON R - 168 (168° OF NDB)  
THEN LEFT CLIMBING TO 4000 FT  
PROCEED VOR/NDB AND HOLD



AD ELEV 44 FT

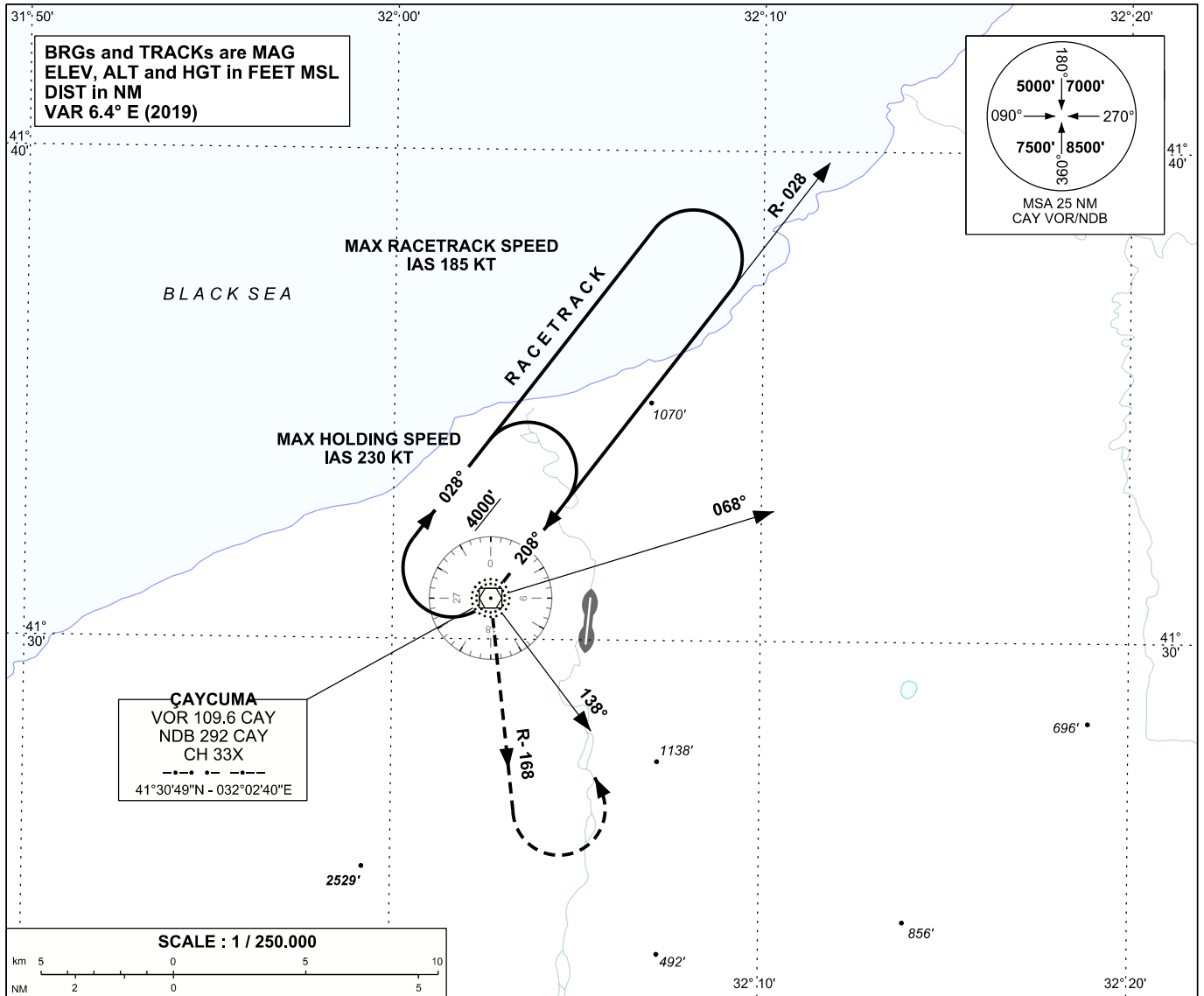
CHANGE: AD ELEV, OCH	NM to/from RWY THR	6	5	4	3	2	1	0	1	2	3	4	5	6	7	8	9	10	11	12	13	14	15
	OCA (H)	A B C D																					
	Straight-in Approach	NOT AUTHORIZED																					
	Circling	2100' ( 2056' )											2600' ( 2556' )										

ZONGULDAK/ÇAYCUMA

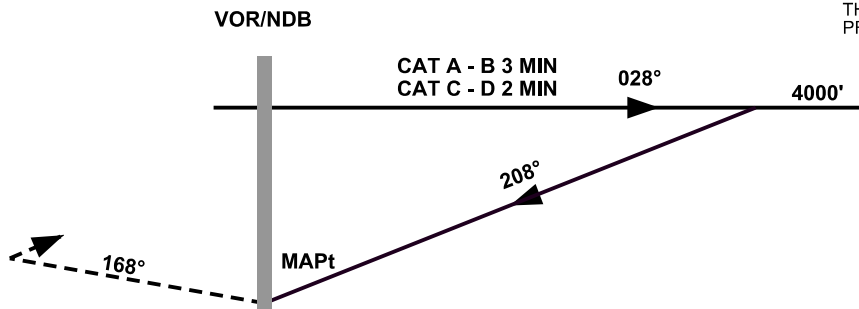
APP	123.7 - 119.55 - 241.725	AD ELEV	44 FT
TWR	123.7 - 119.55 - 241.725	TRANSITION ALTITUDE	10000 FT
ATIS	119.275		

INSTRUMENT  
APPROACH  
CHART - ICAO

VOR D, NDB B



**MISSED APPROACH**  
CLIMB 3200 FT ON R- 168 (168° OF NDB)  
THEN LEFT CLIMBING TO 4000 FT  
PROCEED VOR/NDB AND HOLD



CHANGE: AD ELEV, OCH

AD ELEV 44 FT																						
NM to/from THR RWY	6	5	4	3	2	1	0	1	2	3	4	5	6	7	8	9	10	11	12	13	14	15
OCA (H)					A	B				C				D								
Straight-in Approach	NOT AUTHORIZED																					
Circling					2100' ( 2056' )				2600' ( 2556' )													

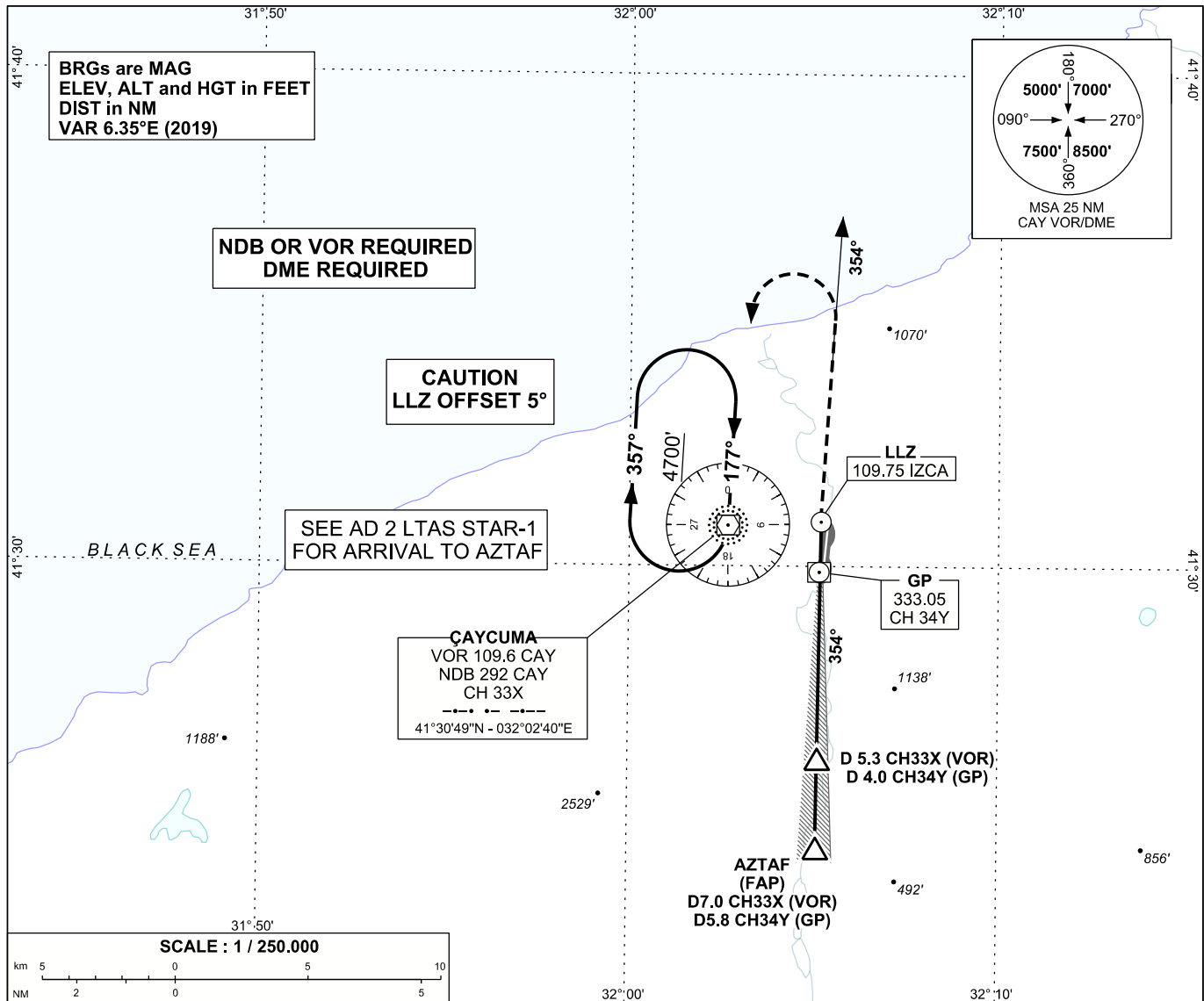




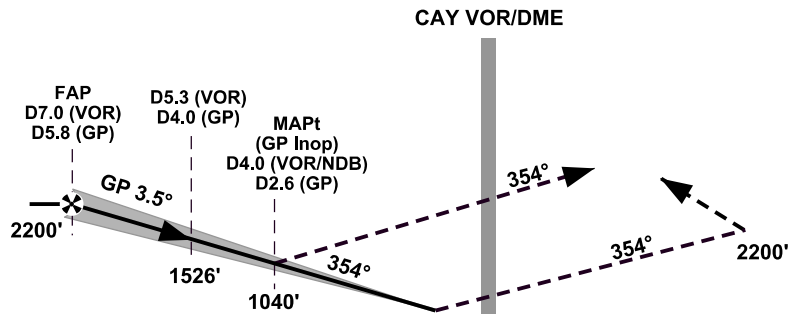
ZONGULDAK/ÇAYCUMA  
ILS Y CAT I  
RWY 36

APP	119.55 - 123.7 - 241.725	AD ELEV	44 FT
TWR	119.55 - 123.7 - 241.725	TRANSITION ALTITUDE	10000 FT
ATIS	119.275		

INSTRUMENT  
APPROACH  
CHART - ICAO



**MISSED APPROACH**  
CLIMB TO 2200 FT ON LOCALIZER  
COURSE (354°) THEN TURN LEFT CLIMBING  
4700 FT PROCEED CAY VOR/NDB AND HOLD



RWY 36 THR ELEV 44 FT

NM to/from THR RWY 36

OCA (H)		A	B	C	D	Establish GP at D 7.0 (VOR) D 5.8 (GP) ILS RDH 55 FT
Straight-in Approach	Missed APP 2.5%	600' ( 556' )				
	Missed APP 3.5%	550' ( 506' )				
GP Inoperative		1040' ( 996' )				
Circling		2100' ( 2056' )		2600' ( 2556' )		

CHANGE: CHART REVISED